

# ROADSIDE

SERVICES AND SOLUTIONS

SIGNAGE, CIVIL WORKS, GUARDRAIL, BOLLARDS,  
FENCING AND ENGINEERING

## Company Profile

[www.roadside-services.com.au](http://www.roadside-services.com.au)

“Creating a **safer**  
**environment**”™



# // Creating a **safer** **environment** //

TM



SIGNAGE



CIVIL WORKS



GUARDRAIL



BOLLARDS



FENCING



ENGINEERING

With a strong focus on creating a safer environment, we are committed to delivering solutions that enhance safety, reliability, and confidence across our roads, public spaces and essential infrastructure.

**Registered address**

8 SHERRIFFS ROAD WEST,  
LONSDALE, SOUTH AUSTRALIA  
5160

**Australian Business Number**

33 137 851 837



# ROADSIDE

## SERVICES AND SOLUTIONS

SIGNAGE, CIVIL WORKS, GUARDRAIL, BOLLARDS,  
FENCING AND ENGINEERING

"Our service is your solution."

### OUR VALUES

At Roadside Services and Solutions, we believe in constantly innovating and improving, so we can provide the best solutions for our clients.

That's why we've built an unbeatable team of talented and passionate experts.

Our values define the way we operate. Working with integrity and respect is an essential part of providing the best outcomes for our clients and the best environment for our team.

In support of our mission to deliver industry-leading solutions, our values:

- Define how we do business and work with our clients.
- Guide our decision making and describe what is important to us.
- Inspire us to deliver the best outcomes for our clients and road user.

### OUR MISSION

To create a safer environment.

### OUR VISION

By working according to our values, we create a clear vision for each project we undertake.

This ensures we achieve our objectives as a result of the vision we pursue.

The values that guide our vision:

- We work safely at all times.
- We act with honesty and integrity.
- We are action-focused.
- We deliver excellence in our work standards.
- We work as a team and take pride in our people.

# Contents

\*To quick dial to any specific page just click on one of the sub-headings below.

## OUR CAPABILITIES

- SIGNAGE
- CIVIL WORKS
- GUARDRAIL
- BOLLARDS
- FENCING
- ENGINEERING
- SAFETY PRODUCTS

## OUR COMPANY PROFILE

- CORPORATE SOCIAL RESPONSIBILITY STATEMENT
- OUR PEOPLE
- DIRECTOR PROFILES
- KEY MANAGEMENT
- WORKS SUPERVISORS
- ENGINEERS AND ESTIMATORS
- SALES AND DEVELOPMENT
- SIGNAGE PRODUCTION MANAGER
- ORGANISATIONAL CHART
- PLANT EQUIPMENT AND VEHICLES
- TECHNOLOGY AND DIGITAL TRANSFORMATION
- OUR DIGITAL ENVIRONMENT
- COMMUNITY

## OUR CONTACT DETAILS

- ROADSIDE SERVICES AND SOLUTIONS PTY LTD







NORTHERN TERRITORY



SOUTH AUSTRALIA

## About us

**ROADSIDE SERVICES AND SOLUTIONS PTY LTD ('ROADSIDE') IS A PROGRESSIVE CIVIL WORKS AND ORAFOL CERTIFIED MANUFACTURER AND SUPPLIER OF QUALITY ROAD AND SAFETY SIGNS.**

Roadside also specialises in the supply and installation of guardrail and energy-absorbing bollards.

The company has strong in-house engineering expertise, manufacturing a range of bespoke road safety products and fencing to meet industrial, commercial, and residential needs.

Roadside is a wholly Australian owned company, founded in 2009. Together with our Australian-made certification Roadside is a proud employer and manufacturer of Australians delivering Australian-made products.

Roadside's manufacturing, engineering and civil works operations employ 45 people at our two operations in Lonsdale, South Australia and Winnellie, Northern Territory.

Catering to the needs of state road authorities, local governments, civil construction companies, mine sites, supermarkets, hospitals, education facilities and energy facilities, the Roadside commitment is "our service is your solution"

### ROADSIDE SERVICES AND SOLUTIONS ACCREDITATIONS





# ROADSIDE

## SERVICES AND SOLUTIONS

SIGNAGE, CIVIL WORKS, GUARDRAIL, BOLLARDS,  
FENCING AND ENGINEERING

## Capabilities

### OUR PRODUCTS AND SERVICES

#### SIGNAGE

- road and safety signs
- full design services
- manufacturing and installation
- temporary signs
- multi-message signs and frames
- brackets and other sign accessories

#### CIVIL WORKS

- drainage and stormwater
- kerb and channel works
- road construction and maintenance
- concrete footpaths and vehicle crossing works
- construction of traffic islands
- pedestrian and cycleway bridges
- paving, ramps and tactiles
- retaining walls and fencing
- landscaping and earthworks

#### GUARDRAIL

- steel beam and wire rope safety barrier systems
- bridge rail
- box beam rail
- pole buffers
- crash attenuators
- crash cushions
- motorcycle impact barriers

#### BOLLARDS

- energy absorbing bollards
- hostile vehicle mitigation bollards
- retractable bollards
- t-top bollards
- timber bollards
- recycled plastic bollards

#### FENCING

- professional fencing across South Australia
- custom design, engineering, and install
- wide range of fencing solutions
- security and child-safe fencing
- durable, compliant materials and finishes
- tailored solutions for every application
- end-to-end service, start to finish
- reliable delivery on time, on budget
- strength, safety, and style guaranteed

#### ENGINEERING

- design and trouble shooting
- protective barriers
- signage frames and stands
- custom frames
- mounting brackets and sleeves
- structural walls
- fencing and site screens



# Signage

## IN-HOUSE DESIGN • LOCAL MANUFACTURING • GUARANTEED QUALITY

Roadside Services and Solutions provides end-to-end signage solutions across South Australia and the Northern Territory.

With full in-house design services and state-of-the-art manufacturing facilities in Lonsdale and Winnellie, we deliver signage that is fully compliant, durable, and Australian-made.

All signs are produced using industry-leading Orafol products, ensuring safety, compliance, and long-lasting performance. Roadside holds pre-qualification with all Australian road authorities and provides expert guidance on national, state and local government requirements.

## OUR SIGNAGE RANGE

We manufacture regulatory, warning, guide, hazard and safety signs for all specifications. Street name, transport and temporary signage, custom designs as well as accessories.

## WHY ROADSIDE SIGNAGE ?

### Australian-Made

Designed and manufactured locally in South Australia and the Northern Territory.

### Compliant and Trusted

Meeting all state and national standards.

### End-to-End Service

Design, manufacture, supply, and delivery.

### Quality Guaranteed

Backed by material warranties for durability and performance.

### No Imports

We don't sell cheap, non-compliant imported signs.

At Roadside Services and Solutions, we don't just sell signs, we make them. Every sign is manufactured to the highest standards, ensuring safety, compliance and reliability for every project.



# Signage

## QUALITY AUSTRALIAN-MADE SIGNS - DESIGNED TO SURVIVE THE HARSH AUSTRALIAN CLIMATE

Regardless of the application or requirements, Roadside can manufacture and supply signs along with detailed installation instructions or can install signage, no matter the location or quantity. Our range of signage solutions includes:

- guide signs for freeways
- suburban and rural directional signs
- custom informational and descriptive signs for recreational areas
- all fixtures including frames and posts

## SIGNAGE ACCREDITATION

Roadside Services and Solutions provides exceptional customer service and delivers consistently high-quality products.

Wherever possible, we choose suppliers who share our vision and commitment to sustainability. That is why Roadside proudly partners with Orafol, a global leader in innovative graphic, reflective, and adhesive products.

With decades of expertise and operations in more than 100 countries, Orafol is renowned for its high-performance reflective materials, durability, and environmental responsibility. Roadside exclusively uses Orafol products in our manufacturing facilities in Adelaide and Darwin, ensuring every sign we produce meets the highest standards of safety, compliance, and long-term reliability.

As an Orafol Certified Manufacturer, Roadside adheres to rigorous production guidelines and is authorised to provide extended warranties on permanent signage, backed by Orafol's proven quality and durability.

Annual certification and auditing validate our compliance with Orafol's strict manufacturing standards, guaranteeing our customers receive products of the highest performance and longevity.

## WARNING SIGNS

There are many warning signs related to the use of various thoroughfares. Roadside manufactures and supplies a full range of these signs aimed at advising of the need for awareness and caution on roads, cycleways and paths.

## SAFETY SIGNS

Our fully compliant safety signs are designed to keep road users safe from potential risks, dangers and hazards. They serve to warn of risks you need to be aware of in order to gain safe and effective passage. They can also advise of available facilities aimed at keeping motorists safe in emergency situations, such as fires, and of dangers in the workplace or recreational areas. Safety signs can be appropriate on roads, cycleways, footpaths as well as in public or private buildings, rooms, workplaces and sites, car parks, in public areas and other spaces utilised by people.

## GUIDE SIGNS

We manufacture and supply a full range of guide signs for use on all thoroughfares, including roads, cycleways and paths. These signs serve to advise drivers, riders and pedestrians of upcoming dangers, hazards, changes, road conditions, directions and facilities of which they need to be aware to gain safe and effective passage. As well as being appropriate on roads, cycleways and footpaths, they can also be used as in car parks and other spaces utilised by vehicles or pedestrians.

## HAZARD SIGNS

At Roadside, we design, make and supply a full range of compliant signs warning of upcoming hazards. These signs serve to warn drivers, riders and pedestrians of hazards about which they need to be aware.

## INFORMATION SIGNS

Our full range of information signs and markers advise of upcoming facilities and local regulations. These signs serve to warn and inform drivers, riders and pedestrians about facilities, hazards, regulations and information they need to be aware of to gain safe and effective passage or access, or carry out activities.





# Signage

## REGULATORY SIGNS

There are many regulations pertaining to road uses and we manufacture and supply a full range of regulatory signs covering these applications.

## STREET NAME SIGNS

We design, manufacture and supply a full range of street name signs and accessories for councils and other authorities at local or regional levels.

## TRANSPORT SIGNS

Our fully compliant range of transport signs warn road users of the presence of possible hazards relating to large or unorthodox vehicles, including trucks. With increasing numbers of heavy transport vehicles on the roads, it is important that all users be aware of potential risks relating to length, width, height and other unorthodox aspects that may catch other road users off-guard.

## TEMPORARY SIGNS

Roadside also designs, manufactures and supplies a range of temporary signs which can be appropriate on roads, cycleways, footpaths as well as in carparks and other spaces utilised by vehicles or pedestrians.

In these instances, there is often the need for alternative signs as it is difficult to implement a 'one size fits all' approach to placement and other usual regulations that apply to more permanent signage.

As well as traditional temporary signs, we make boxed edge plate signs while our Corflute signs are often the perfect solution for temporary signage. These are made from tough, durable and lightweight Corflute, which is ideal when signs need to be moved regularly or where it is impractical to place heavier or permanent signage.

## SIGNAGE ACCESSORIES

There are also various regulations and guidelines pertaining to the use of signage accessories. Roadside manufactures and supplies a comprehensive range. As well as being designed to provide safe and secure signage, they are also made as theft-proof as possible to prevent important signage being removed by thieves and trophy hunters or being damaged.

## MANUFACTURE AND INSTALLATION

We design, manufacture and supply signage to meet the necessary Australian standards. All of our signs are manufactured using industry-leading Orafol products.

We have a strong focus on innovation and continual improvement. To create high-quality results for clients, we use state-of-the-art roll-to-roll printers, capable of producing more than 300m<sup>2</sup> of Class 400 and Class 1000 reflective material each day.

Our signage solutions are:

- designed and manufactured to meet Australian standards
- suitable for a wide variety of applications
- custom designed for your exact requirements
- backed by the Orafol Warranty Programme

When it comes to installation of our quality products, our expert team will handle all aspects, including locating underground cables, sensitive earthworks, clearance heights, fasteners and fittings, and traffic management.

Regardless of the type of signs, quantity, or location, we can handle the installation. Our installation services include:

- overhead guide signs for freeways
- informational signs for car parks
- wayfinding and directional signs
- directional signs for suburban and rural areas

We have clear specifications for all signage to ensure compliant installations which meet project deadlines.

- compliant with all Australian and industry standards
- consistent with existing signage and specifications
- completed carefully not to disrupt surrounding infrastructure and underground services





From warning signs to custom solutions, we provide high quality compliant signage and products that keep our roads and communities safe.



# Civil Works

**AT ROADSIDE SERVICES AND SOLUTIONS, CIVIL WORKS ADD VALUE TO MANY OF OUR OTHER PRODUCTS AND SERVICES. THE CIVIL WORKS DIVISION UNDERTAKES A VARIETY OF WORK:**

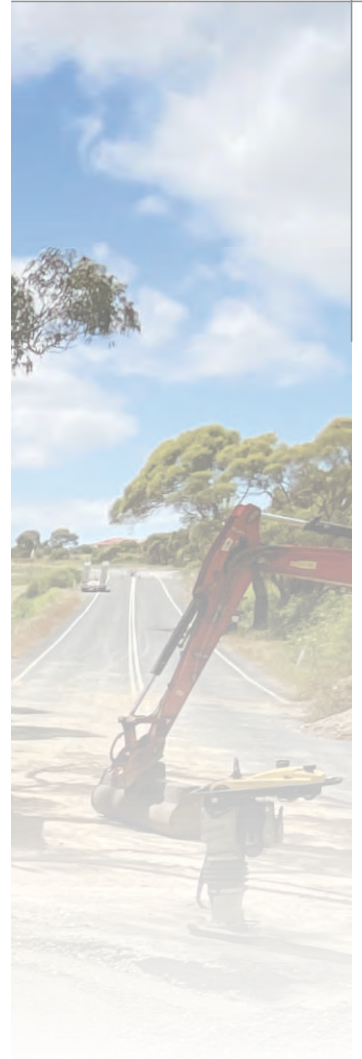
- drainage and stormwater
- kerb and channel works
- road construction and maintenance
- concrete footpaths and vehicle crossing works
- construction of traffic islands
- pedestrian and cycleway bridges
- paving, ramps and tactiles
- retaining walls and fencing
- landscaping and earthworks

## EXPERIENCED CIVIL WORKS TEAM

These products and services are backed by the experience and expertise of our Civil Works Division teams, ensuring every job is carried out efficiently, effectively and to the requirements of our customers.

Our team can tailor the right civil solution for each client and does so by listening to the client's individual requirements and designing the best result.

“Building safe, reliable, and lasting solutions tailored to every client, every project.”



# Civil Works

**LANDSCAPING AND PAVING IS AN IMPORTANT COMPONENT OF ANY CIVIL WORKS PROGRAM, PROVIDING THE VITAL FINISHING TOUCHES TO ENSURE SAFE AND EFFECTIVE USE OF FACILITIES.**

It is important with paved areas and on paths and cycleways that anti-slip treatments are applied, particularly on slopes, at junctions, alongside waterways, on pedestrian bridges and in frosty or icy areas. We have expertise in this area while the products we use are designed to increase safety for users.

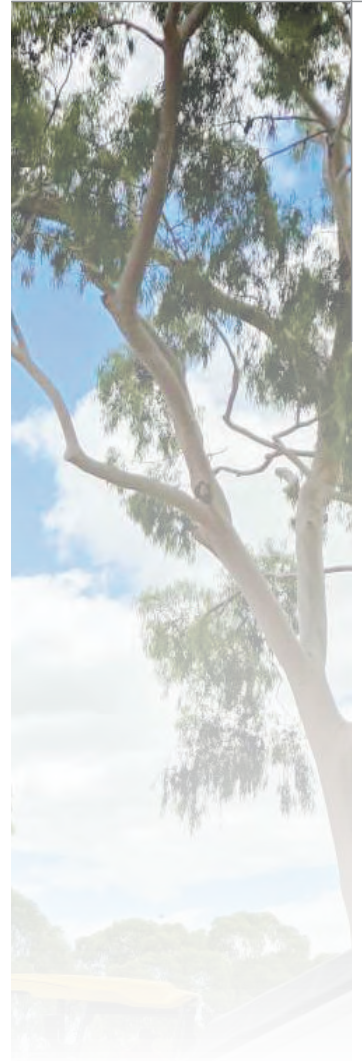
We use a premium lightweight, flexible high-polymer tile adhesive. This is designed to resist intermittent water exposure and has 33% less shrinkage than traditional adhesives.

## TAILORED TO SUIT

Our landscaping and paving solutions are tailored to meet the unique needs of each project, combining durability, safety, and visual appeal. From public spaces to high-traffic pathways, we ensure every surface is built to last, delivering both functionality and a professional finish that enhances the overall environment.

“Landscaping is an important component of many of the civil works we undertake.

Our experienced landscaping crew is ideally placed to ensure the job is finished professionally.”







From drainage to paving to landscaping and so much more,  
we can provide tailored solutions that enhance safety,  
accessibility, and the overall environment.

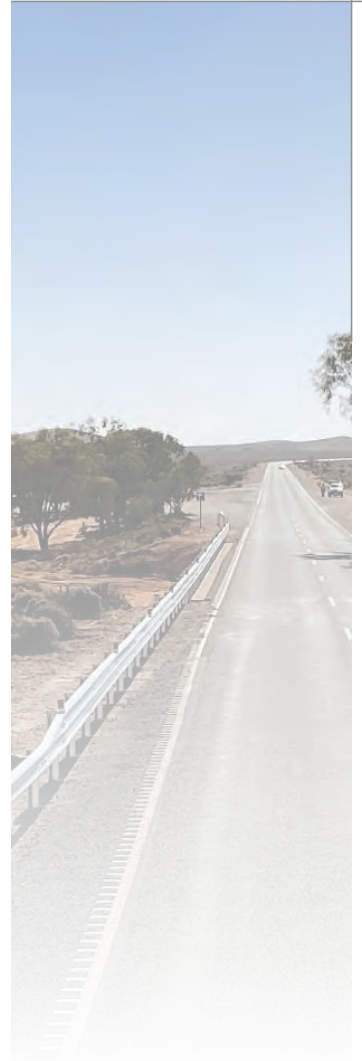


# Guardrail

**GUARDRAILS ARE DESIGNED TO CONTAIN AND REDIRECT ERRANT VEHICLES TRAVELLING AT HIGH VELOCITIES AND RELATIVELY LOW IMPACT ANGLES.**

**OUR GUARDRAILS ARE OF THE HIGHEST QUALITY AND STRENGTH, PROTECTING VEHICLE OCCUPANTS FROM THE MANY DANGERS OF VEHICLES RUNNING OFF THE ROAD AS WELL AS MINIMISING DAMAGE TO VEHICLES AND PROTECTING OTHER ROAD USERS FROM ERRANT VEHICLES.**

We offer supply only or can deliver and install the guardrails with all work coordinated by our expert team. Installation is according to safety standards and crash test guidelines and can be tailored to meet your specific requirements.



"High-quality guardrails, engineered to protect road users, minimise vehicle damage, and enhance overall road safety."







Supplying and installing guardrails that meet strict safety standards and provide lasting protection for all road users.

# Bollards



## ENERGY ABSORBING BOLLARDS

### Improve public safety

Energy Absorbing Bollards (EABs) protect pedestrians, drivers, assets and infrastructure because they are capable of absorbing kinetic energy during a collision. This proven science minimises injuries for the driver while protecting pedestrians and property.

The EABs can be installed in a wide variety of locations to ensure public safety. Our EAB solutions include:

- protection for outdoor dining areas, public spaces, pedestrians and assets.
- options to suit high-speed and low-speed areas.

Our team can install your EABs to meet the requirements of your location or we can supply your bollards with a detailed installation manual.

The Roadside EABs are:

- designed to reduce injuries for drivers in the event of a collision.
- effectively protect pedestrians, assets and infrastructure.
- crash tested and safety rated for impacts up to 60km/h.



## RETRACTABLE BOLLARDS

### Prevent unauthorised vehicle access

Our retractable bollards provide all the safety benefits of Non-Deforming Bollards (NDB) while also enabling authorised vehicles to access restricted areas when necessary. They are suitable for a wide variety of locations.

Our retractable bollard solutions include:

- retractable Non-Deforming Bollards for locations where there is a risk of errant vehicles.
- automatic bollards and manually retractable bollards.
- access control to pedestrian areas for emergency vehicles and authorised vehicles.

We can provide the complete solution and install retractable EABs to suit the needs of your location or we can supply bollards with a detailed installation manual.

Roadside retractable bollards are:

- non-deforming
- installed to specification by our expert team
- compliant with Australian standards.





# Bollards



## CAR PARK BOLLARDS

Absorbing low-speed impacts

Energy Absorbing Bollards (EABs) protect pedestrians, drivers, assets and infrastructure because they are capable of absorbing kinetic energy during a collision. This proven science minimises injuries for the driver while protecting pedestrians and property.

The EABs can be installed in a wide variety of locations to ensure public safety. Our EAB solutions include:

- protection for outdoor dining areas, public spaces, pedestrians and assets.
- options to suit high-speed and low-speed areas.

Our team can install your EABs to meet the requirements of your location or we can supply your bollards with a detailed installation manual.

The Roadside EABs are:

- designed to reduce injuries for drivers in the event of a collision.
- effectively protect pedestrians, assets and infrastructure.
- crash tested and safety rated for impacts up to 60km/h.



## END TERMINAL BOLLARDS

Protect motorists and minimise damage

Our retractable bollards provide all the safety benefits of Non-Deforming Bollards (NDB) while also enabling authorised vehicles to access restricted areas when necessary. They are suitable for a wide variety of locations.

Our retractable bollard solutions include:

- retractable Non-Deforming Bollards for locations where there is a risk of errant vehicles.
- automatic bollards and manually retractable bollards.
- access control to pedestrian areas for emergency vehicles and authorised vehicles.

We can provide the complete solution and install retractable EABs to suit the needs of your location or we can supply bollards with a detailed installation manual.

Roadside's retractable bollards are:

- non-deforming
- installed to specification by our expert team
- compliant with Australian standards.



# Bollards

## RAM48 (HVM) BOLLARDS HOSTILE VEHICLE MITIGATION

The RAM48 range of fixed hostile vehicle mitigation bollards provide a high security option for sensitive and high value locations where protecting people and assets is the utmost priority.

The RAM48 is PAS 68 crash test certified to stop heavy vehicles weighing as much as 7,500 kg travelling up to 48 km/h. Following impact, the vehicle is stopped and immobilised – and therefore no longer a threat to people and property. The bollard remains in place ready to protect against the next threat or impact.

Designed in Australia by the experienced security engineers at Roadside Services and Solutions, there are four RAM48 models available to protect people and high value assets according to your unique requirements.

## SAFEST PROTECTION FOR PEOPLE AND ASSETS

While hostile vehicle attacks are not common, it's important to know you're protected.

The RAM48 hostile vehicle mitigation bollard is designed to save lives. It offers the highest level of protection for sensitive locations and high-value assets – specifically for places where there is a risk of vehicles losing control or vehicle-based attacks. It is certified to international security standards.

Barriers often do not stop vehicles instantly, which means attacking vehicles may travel a significant distance before stopping. RAM48 bollards are PAS 68 certified to stop and immobilise a 7,500 kg truck travelling at 48 km/h. After impact, the bollard remains in place, ready to protect against the next threat.

## MANAGE RISK AND PROTECT YOUR COMMUNITY

Threats to people and property from out-of-control vehicles is a real and important safety and security consideration.

The current National Terrorism Threat Level in Australia remains PROBABLE1 according to Australian National Security. Crowded places such as stadiums, shopping centres, pedestrian malls and major events will continue to be attractive targets for terrorists and people intending to cause maximum harm. Several incidents have proven Australia is not immune.

Security measures should be equal to the risk and appropriate to the location. But they are only as strong as the weakest link. Our engineers are committed to providing hostile vehicle mitigation bollards that government, private entities, education providers and business owners can depend on to protect your community.



RAM48 bollard before and after impact by test vehicle.

Parts	Dimensions	Weight	Rated
RAM48H ( HYDRAULIC / PNEUMATIC / ELECTRO-MECH )			Crash test certified <b>PAS 68</b>
Bollard assembly	500 (L) x 500 (W) x 2500 (H)	400 kgs	Stop vehicles up to <b>7,500 kg</b>
Bollard only	200NB x 1500 (H)	180 kgs	Travelling up to <b>48 km/h</b>
Hub support	500 (L) x 500 (W) x 1500 (H)	140 kgs	
Concrete reinforcement	5400 (L) x 1800 (W)	80 kgs	





# Bollards

## WHAT IS PAS 68?

PAS 68:2013 is a Publicly Available Specification (PAS) sponsored by the UK Government's Centre for the Protection of National Infrastructure.

PAS 68 is the standard referenced in Australia's Strategy for Protecting Crowded Places from Terrorism, published by the Australian Government in 2017. The International Workshop Agreement 14-1 (IWA 14-1) is a similar standard used to measure the effectiveness of vehicle security barriers in other jurisdictions.

A PAS 68 certification helps ensure the effectiveness of high-security products. The PAS 68 rating covers a range of products depending on the level of security you need (eg size of attacking vehicle and potential speed of travel).



Pictured: Test vehicle after collision with RAM48 bollard.

## SAVE LIVES, PROTECT PROPERTY

Impact-tested hostile vehicle mitigation bollards are the safest way to provide a secure perimeter that will allow access for people while stopping vehicles.

They are ideal for:

- Airports
- Embassies
- Government buildings
- High-value property
- Hotels and resorts
- Infrastructure assets
- Leisure and tourism operations
- Military assets
- Outdoor markets
- Parks and public spaces
- Pedestrian areas
- Religious buildings
- Schools and universities
- Shopping and retail precincts
- Stadiums and sporting venues

Parts	Dimensions	Weight	Rated
RAM48F ( FIXED )			Crash test certified <b>PAS 68</b> Stop vehicles up to <b>7,500 kg</b> Travelling up to <b>48 km/h</b>
Bollard assembly	500 (L) x 500 (W) x 1500 (H)	358 kgs	
Bollard only	200NB x 1500 (H)	180 kgs	
Hub support	500 (L) x 500 (W) x 500 (H)	98 kgs	
Concrete reinforcement	5400 (L) x 1800 (W)	80 kgs	





Engineered for strength and durability, our bollards provide effective protection for high-risk areas, controlling access and minimising risk for all road users and pedestrians.



# Fencing

## CUSTOM DESIGN • CONSTRUCTION • INSTALLATION

Roadside Services and Solutions provides fencing tailored to a wide range of applications, from securing internal and external areas to restricting access, protecting sensitive sites, and enhancing overall safety and amenity.

## OUR FENCING SOLUTIONS

### Good Neighbour / Modular Construction

Available in a wide range of colours, heights, and styles.

### Post and Rail Fencing

Galvanised or powder-coated posts with durable Colorbond cladding.

### Chain Wire Security Fencing

Galvanised or black PVC mesh and post systems, fully compliant with AS2423.

### Tubular Security and Child-Safe Fencing

Loop, rod, or flat top options with anti-tamper fittings.

### Custom Design & Engineering

Bespoke solutions developed to suit specific site requirements.

## WHY CHOOSE US ?

### End-to-end service

Design, engineer, construct, supply, and install.

### South Australia-wide capability

Delivery across metro, regional, and remote locations.

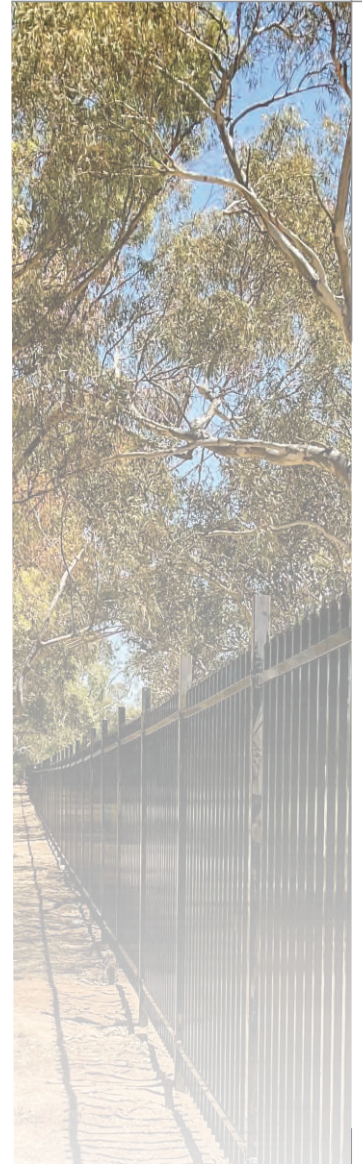
### Highest standards

Compliant with all industry and safety requirements.

### Reliability guaranteed

Delivered on time and on budget.

Roadside Services and Solutions is your trusted partner for fencing projects of any scale offering strength, safety, and style for every application.







Strong, reliable fencing solutions designed to secure sites, protect assets, and enhance safety in every environment, from small projects to large-scale infrastructure.



# Engineering

## COMPLIANT • LOCALLY MANUFACTURED • SAFETY SOLUTIONS

At Roadside Services and Solutions, we engineer and manufacture innovative, fully compliant safety products designed to improve public safety across Australia.

Our expert team ensures projects are coordinated efficiently, meeting schedules and site requirements.

By choosing RSS, you gain the confidence of Australian-made products, manufactured in-house to comply with state-based standards - delivered quickly, without the delays of offshore shipping.

## ENGINEERING AND MANUFACTURING SOLUTIONS

### Energy Absorbing & Non-Deforming Bollards

With integrated safety screens to protect crews and separate traffic from work zones.

### Retractable Bollards

Both energy absorbing and non-deforming, designed to control access and prevent unauthorised vehicle entry.

### Signage & Multi-Message Sign Frames

Ensuring road users are alerted to hazards and changes in traffic conditions.

### Legs, Swing Stands and Custom Frames

For live roadwork warning systems that safeguard motorists and workers.

### Ground Spikes & Sleeves

Providing secure and compliant road sign installation.

### Fencing & Site Screens

Protecting crews and clearly sectioning off construction areas.

### Custom Safety Solutions

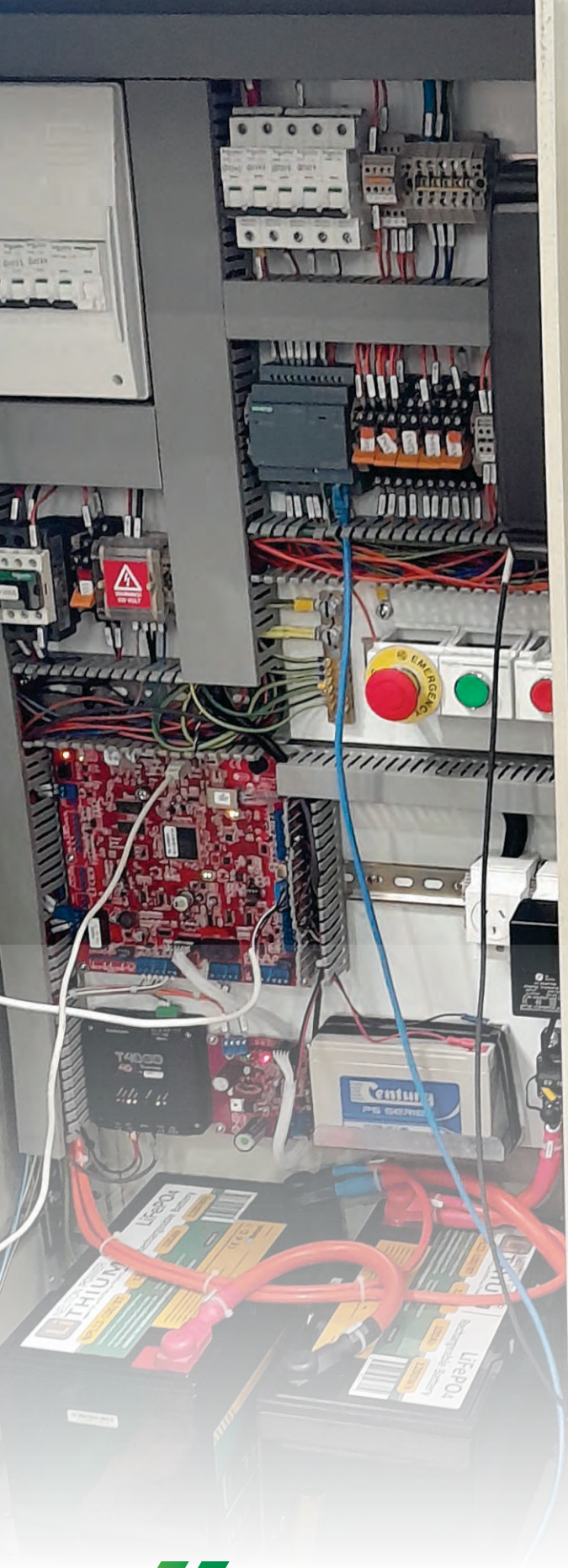
Engineered to meet specific site challenges.

## WHY CHOOSE US ?

Roadside Engineering delivers trusted, compliant, and innovative Australian-made solutions, designed, manufactured, and installed to keep roads and communities safe.







Delivering innovative Australian-made solutions,  
designed, manufactured, and installed to keep our roads,  
worksites, and communities safe.



# Safety Products

**ROADSIDE IS A LEADING AUSTRALIAN SUPPLIER OF A RANGE OF AWARD-WINNING, SAFE AND SIMPLE TEMPORARY PRODUCTS. OUR PRODUCTS ARE FULLY COMPLIANT WITH AUSTRALIAN STANDARDS AND THE LATEST CODES OF PRACTICE.**

The range of plastic product solutions, which ensures safety for workers and members of the public, includes:

- road plates and trench covers
- barriers and temporary fencing
- cones and speed bumps
- ground protection and temporary walkways

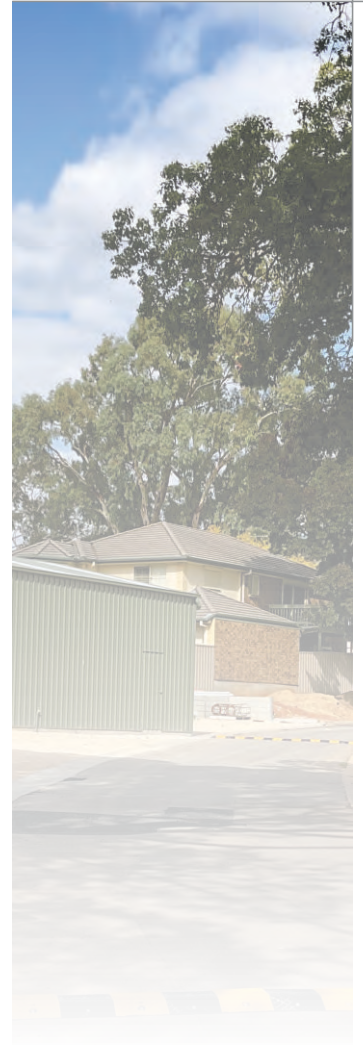
Worldwide, there is a strong desire to limit our impact on the environment. The road safety industry is a significant contributor and Roadside has a range of high-quality products manufactured using 98% recycled plastic material. The remaining 2% is masterbatch, light fastener and UV stabiliser. The 98% recycled material content, by mass, is in compliance with ISO 14021:2016.

The products are:

- environmentally friendly
- long lasting
- low maintenance

Our range of recycled plastic products includes:

- wheel stops
- rumble bars and speed humps
- bollards and fencing
- street furniture and decking







Our range of lightweight, durable plastic products is easy to deploy and can solve a wide range of common safety hazards for roads, footpaths and work sites."



# ROADSIDE

SERVICES AND SOLUTIONS

SIGNAGE, CIVIL WORKS, GUARDRAIL, BOLLARDS,  
FENCING AND ENGINEERING

## Company Profile

- Corporate Social Responsibility Statement
- Our People
- Director Profiles
- Key Management
- Works Supervisors
- Engineers and Estimators
- Sales and Development
- Signage Production Managers
- Organisational Chart
- Community
- Technology and Digital Transformation

# Corporate Social Responsibility Statement

## ROADSIDE SERVICES AND SOLUTIONS IS AN ORGANISATION THAT VALUES SOCIALLY RESPONSIBLE BEHAVIOURS AND IS COMMITTED TO FULFILLING ITS CORPORATE SOCIAL RESPONSIBILITIES.

We conduct business with integrity and meet or exceed corporate governance, law and standards and we give back to the community through fund raiser events, donations and support when possible.

Our culture is supported with policies which ensure the company acts in a safe, environmentally sustainable, ethical and socially responsible manner.

## CORPORATE GOVERNANCE

Roadside is committed to ensuring the highest standard of corporate governance. This is supported through clearly written policies and procedures which guide behaviours and reduce risk within the business. Our policies and procedures provide surety and accountability for all personnel. We have an Integrated Management System (IMS) in place which provides a framework for the direction and control of the business and a workplace expectations policy which provides personal and corporate integrity standards.

We are committed to ensuring we comply with relevant legislation, appropriate standards and codes of practice.

## ENVIRONMENTAL MANAGEMENT

We have in place an environmental management strategy to ensure we minimise the impact of our operations on the environment and reduce resource use to meet with community, stakeholder and personnel expectations.

We adhere to our ISO 14001 (Environmental Management Systems) certification in implementing our environmental management policy which focuses on the identification, mitigation and management of environmental risks from our operations.

We provide training to our personnel and follow written procedures and strategies for acting responsibly and maintaining the environment in the performance of our tasks.





# Corporate Social Responsibility Statement

## ENVIRONMENTAL SUSTAINABILITY

It is our aim to be an environmentally responsible neighbour within our community. We contribute toward the protection of our natural environment through ensuring our operations preserve the environmental sustainability of the planet which ensures the sustainability of our business. We aspire to minimise our impact on our environment and maximise the effective use of resources. We strive to achieve this by increasing awareness and communication of our efforts in accordance with our environmental sustainability policy and fostering responsible environmental behaviour amongst personnel, customers and the broader community. Initiatives employed towards our environmental sustainability policy include favouring recycled materials, clean energy sources, the use of processes which do not adversely affect our environment and protecting our natural environment.

## OCCUPATIONAL HEALTH AND SAFETY

Roadside is committed to providing and maintaining a safe and healthy workplace for all personnel, clients, visitors and members of the public. We are certified to OHSAS 18001 (Occupational Health and Safety Management Systems) and endeavour to make health and safety an integral part of everything we do. Hazards and risks to health and safety will be eliminated or minimised as far as is reasonably practicable.

## ANTI-SLAVERY

We have a zero tolerance approach to modern slavery and are committed to minimising the risk of modern slavery occurring within our business, supply chains or through other business relationships and will only do business with organisations which comply with our anti-slavery policy.

## PRIVACY AND DATA SECURITY

We take the privacy and security of our data seriously. Our privacy policy governs the way we collect, use, disclose, store, secure and dispose of personal information. Physical, electronic and procedural safeguards are used to provide data security to protect information from misuse, loss and from unauthorised access, modification or disclosure. For further information on the data we collect and how we protect it, please see our privacy policy.

## COMMUNITY

Roadside has a history of contributing to the community through fund raiser events and donations and provide support for disadvantaged people through employment programs. We also contribute through a health-related program for our employees which gives directly back into community health programs.



# Our People

**WE ARE PROUD OF OUR PEOPLE AND INVEST IN THEIR SAFETY, ADVANCEMENT AND WELL BEING. WE RECOGNISE THAT WORLD-CLASS PRODUCTS AND STATE-OF-THE ART EQUIPMENT ALONE DO NOT MAKE A GREAT COMPANY. PEOPLE DO.**

**THAT'S WHY ROADSIDE SEEKS TO RECRUIT THE BEST IN THE BUSINESS, THE BRIGHTEST, THE MOST INNOVATIVE, THE HARDWORKING AND THOSE WITH POTENTIAL.**

We believe in nurturing, training and supporting our people. We truly embrace workplace diversity and actively recruit Aboriginal and Torres Strait Islanders. We promote people on the basis of merit and have effective gender equity practices.

## SERVICE

To provide a total customer solution with our services of sign production and installation, bollards, civil works, engineering and line marking. We are known for our professionalism and expertise.

## PEOPLE

Recruit and develop a team of great performing people who uphold the behaviours of teamwork, problem solving, action focused, respect and responsibility to contribute to success and growth.

## TEAMWORK

We act together by pulling together as a team. We effectively use our differences in skills, capabilities, and resources to do the best we can for all our customers in every way.

## ACTION FOCUSED

We have a bias for action – get the job done and do it safely. Right First Time. In Full, On Time. We consistently deliver to customer expectations. We embrace stretch targets by focusing on what is the absolute best we can do, always.

## RESPECT AND RESPONSIBILITY

We always respect ourselves whilst respecting and valuing each other's differences. We are supportive of each other. We maintain the highest levels of honesty and integrity. We are responsible for our actions.

## PROBLEM SOLVING

We don't say no – we say how? We are never satisfied until the customer is happy. We strive to always say how can we make this happen? We are always seeking for ways to improve everything we do. We are solutions focused and don't see problems just opportunities. We are resilient and tenacious in the face of adversity.







Our people are our greatest strength, driving service, safety, innovation and success with every project we take on. Their skills, commitment, and collaboration make the difference.

# Director Profiles



## DOUG TRAVIS

### Chairman of the Board

With a distinguished medical career spanning over four decades, Douglas Travis has transitioned from his role as a leading urologist to becoming an accomplished board director, leveraging his extensive expertise in healthcare, governance, and corporate leadership across diverse industries.

Dr Travis has expanded his board portfolio by applying his governance and strategic skills to Roadside Services and Solutions, a leader in the signmaking and civil works construction industry.

His ability to work collaboratively, coupled with his forward-thinking approach, allows him to provide valuable insights into risk management, operational efficiency, and stakeholder engagement.



## CRAIG WOODS

### Chief Executive Officer and Founding Partner

Craig Woods co-founded Roadside Services and Solutions in 2009 with a vision to provide exceptional solutions for roads and traffic infrastructure.

Craig's determination, industry expertise, and passion for delivering high-quality work have been the foundation of the company's success.

With years of prior experience in the industry, Craig has built a loyal and ever-growing client base, earning a reputation for excellence in service delivery and innovative solutions. Under his leadership, Roadside Services and Solutions has grown into a trusted partner for businesses and communities, delivering reliable and safe traffic infrastructure.



## YOLANDA TORRISI

### Non-Executive Director and Corporate Affairs Manager

Yolanda Torrissi is a dynamic business leader in starting, developing and successfully growing new mining and industry ventures into profitable operations.

Yolanda has 25 years of media and public relations experience from working directly in media publishing, business development, client engagement and investor and community relations. Yolanda has managed the media and public relations portfolios for a number of high-profile Australian companies and organisations.

With more than 25 years of experience across journalism, public relations, and business development, Yolanda Torrissi is a people-focused professional who combines outstanding communication skills with vision and vitality to deliver exceptional outcomes for her clients.





# Key Management

**BEN DICKSON****National Operations Manager**

As the National Operations Manager of Roadside Services and Solutions, Ben Dickson has been instrumental in shaping the company's strategic vision and driving its operational success.

With almost 30 years of experience in the road services industry, Ben possesses a deep understanding of all facets of the business, from hands-on operations to high-level strategic client management. His leadership and expertise have played a pivotal role in the company's growth and its strong national reputation.

Ben's industry knowledge, technical skills, and unwavering commitment to excellence instil confidence in clients regarding the quality and reliability of the company's services. His leadership has been key to executing major projects, including the successful bollard installation in Adelaide's Rundle Mall, significant infrastructure upgrades, and the implementation of the company's ISO Quantity System.

**CATHERINE VICKERS****National Manager Human Resources and Workplace Relations**

Catherine is an experienced human resources consultant with a strong track record of implementing procedures that enhance personal and corporate performance. Previous positions include senior HR roles at Foster's Group and Carlton and United Breweries.

Catherine is a champion of workplace flexibility and is a professional member of the Australian Human Resources Institute.

**ANDREA DUNKLEY****Manager Corporate Services**

Andrea is an experienced manager with an extensive background in accounting and law firms.

She holds a Graduate Certificate in Business Management (Organisational Leadership) from Swinburne University of Technology.

Andrea drives business administration efficiencies and helps Roadside Services to constantly deliver best practice in its service and product delivery.



# Works Supervisors



## GLEN ORROCK

### Supervisor

Glen Orrock is a seasoned professional with a diverse background in operations, project management, and leadership.

Since 2020, Glen has been a vital part of the team at Roadside Services and Solutions, where he excels in planning work schedules and overseeing small civil works, guard rail projects, and sign installations.

With more than two decades of experience across multiple industries, Glen's expertise includes directional drilling, blast hole drilling, cellar operations, and team supervision. In other roles with various large to mid-sized construction companies, Glen honed his technical skills in pit and pipe installation, directional drilling, and vac truck operations.

His tenure as a Drill Supervisor saw him manage teams effectively, ensure safety and operational standards, and meet project KPIs with precision.



## TONY ABBEY

### Coordinator – Civil Works South Australia

Tony Abbey brings a wealth of hands-on expertise and leadership to his role as Civil Supervisor.

Holding a Builder's Licence (BLD 303500) and a Certificate IV in Horticulture, Tony's career is built on a strong foundation of technical knowledge, practical skills, and a drive to deliver the best possible results.

Tony's diverse experience spans building works, carpentry and joinery, retaining walls, paving, landscaping, civil construction and stormwater projects. Before joining Roadside Services, he honed his craft in landscaping, carpentry, and paving, developing a well-rounded skill set that continues to benefit every project he oversees.

His most distinguished professional achievement was serving as a Navy mechanical engineer for seven years, a role that instilled in him discipline, resilience, and a commitment to excellence - qualities he now applies daily in civil works.



## PAUL MITCHELL

### Project Manager and Estimator

With more than 35 years of industry experience, Paul Mitchell is a highly skilled and dedicated Project Manager/Estimator at Roadside Services and Solutions.

He holds an Associate Diploma of Surveying and with a wealth of hands-on knowledge, Paul is a vital part of the team, bringing a sharp eye for detail and a passion for delivering exceptional outcomes.

Paul's expertise spans multiple facets of civil construction, including early contractor involvement, bulk earthworks, drainage, pavements, remediation, and utility installations. His deep understanding of SA Water projects, ranging from sewer systems and water infrastructure to pump stations and treatment plants, sets him apart as a leader in the field.





# Engineers and Estimators



## WARRICK STIRLING

### Maintenance and Project Manager

With more than 30 years of expertise in engineering maintenance, construction project management, and technical trades, Warrick Stirling is a highly skilled and versatile professional committed to delivering excellence in every project.

As the former owner and director of Stirling Industries Australia Pty Ltd, Warrick combines deep industry knowledge with an unwavering dedication to quality, customer satisfaction, and team leadership.

Throughout his career, Warrick has demonstrated exceptional abilities in managing complex maintenance activities, streamlining operations, and driving organisational improvements. His hands-on approach and innovative mindset have enabled him to resolve intricate challenges while building and leading effective teams that consistently achieve peak performance.



## WARREN WARDE

### Project Manager and Estimator

With a career built on precision and dedication, Warren Warde brings more than three decades of expertise to his role as Estimator – Project Manager at Roadside Services and Solutions.

Warren holds a certificate in paving and a wealth of hands-on experience. Warren is an integral part of the Roadside team delivering outstanding results for our clients across paving, landscaping, and civil works projects.

Warren takes immense pride in delivering the highest quality work, whether overseeing a major project or refining the smallest detail. His passion for skill development and his drive to achieve a sense of accomplishment upon project completion are at the core of his success.



# Sales and Development



## **KIM POOLE**

Sales Executive South Australia

Kim has a great deal of experience in a variety of different sales, marketing and management roles.

As a Sales Executive, Kim draws on many years of industry experience in earthmoving and mining, local government, civil construction and agriculture.



## **JUSTIN ANGUS**

Sales Executive South Australia

Justin Angus joins the Roadside sales team bringing a wealth of knowledge and respect in relationships with local government authorities in South Australia, the Northern Territory and Western Australia.

With more than 28 years in sales roles across industrial, electrical and automotive industries and working more closely with councils the past eight years, Justin can assist councils efficiently and effectively with all road, civil, guardrail and safety infrastructure requirements.



## **JUDITH WINTER**

Sales Executive Northern Territory

Judy Winter brings a wealth of expertise and enthusiasm to her role as a Customer Service Officer at Roadside, where she has been a valued team member for the past seven months.

With a solid background in administration, finance, customer service, and stock management, Judy's experience spans a variety of industries, including accounts support, front-of-house hospitality, and retail management.

Her most outstanding professional achievement, excelling as a Retail Manager, highlights her strong leadership and organizational abilities. Judy takes pride in delivering exceptional service and fostering a positive environment for both her teammates and customers. She finds motivation in knowing her dedication and commitment create a ripple effect of satisfaction and success.





# Signage Production Manager



## MICHAEL EICHNER

Manufacturing Manager

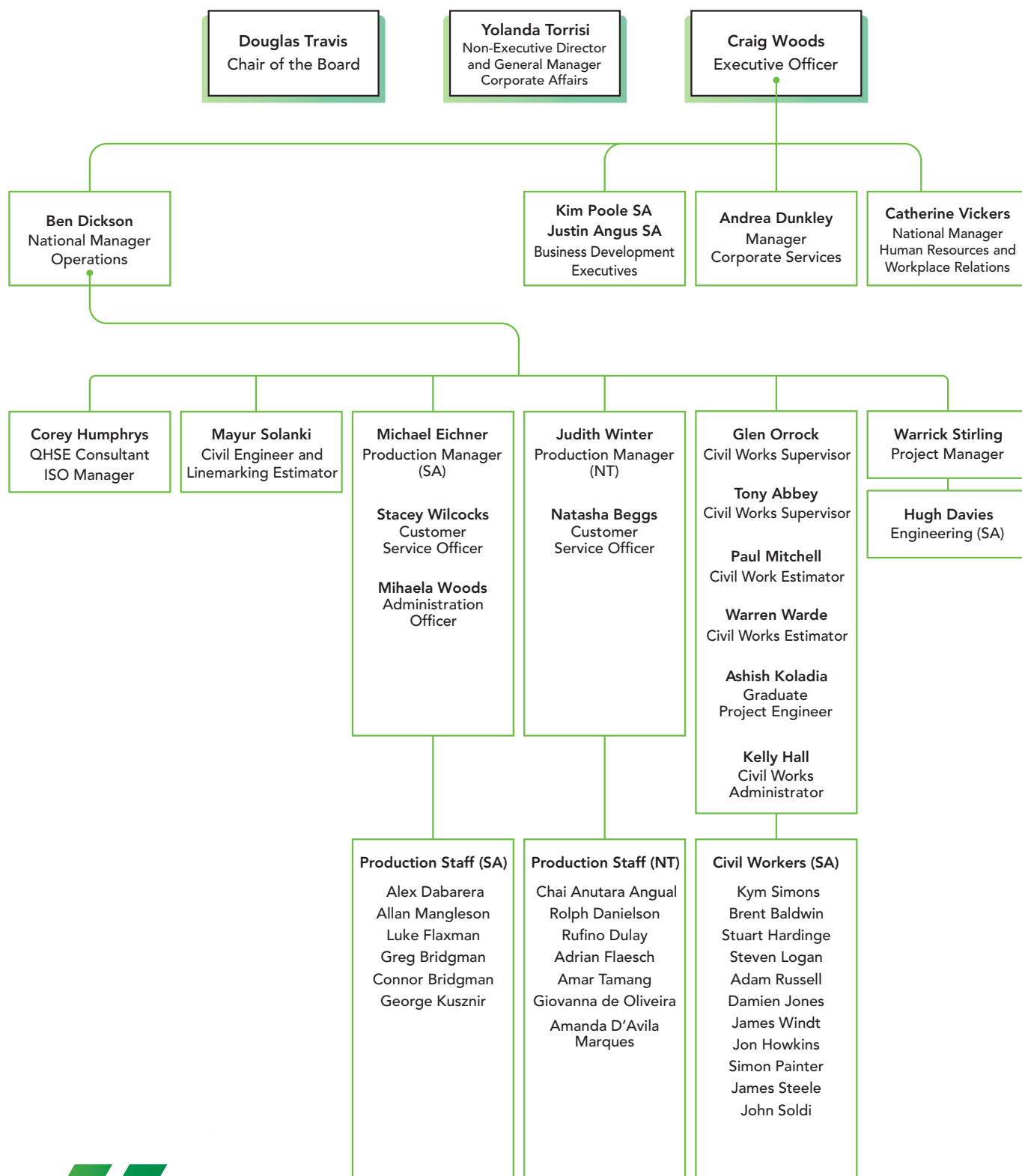
Michael Eichner has been a valued member of the Roadside Services & Solutions team for more than 14 years, bringing extensive experience and hands-on knowledge to his role as Production Manager.

Known for his practical approach and commitment to quality, Michael is motivated by a simple philosophy: "Take pride in everything you do and make sure each sign is done correctly the first time."

This mindset has made him a dependable leader within the production team, ensuring that every sign leaving the factory meets the highest standards.



# Organisational Chart





# Plant Equipment and Vehicles

## WELL-RESOURCED • WELL-MAINTAINED • EXPERTLY OPERATED

Roadside Services and Solutions operates a modern, fully resourced fleet of vehicles, plant, and specialist equipment to support road safety, civil, and engineering projects of every scale across Australia.

Our fleet is maintained to the highest standards, with regular servicing and pre-use safety checks ensuring reliability, compliance, and efficiency.

All units are fitted with essential safety systems and specialist equipment to meet site-specific requirements.

## ROADSIDE FLEET AND EQUIPMENT

### Well-Resourced

A diverse fleet capable of supporting multiple project types.

### Well-Maintained

Regular servicing and inspections ensure safety and reliability.

### Safety First

All vehicles and plant are equipped with safety features and compliance systems.

### Skilled Operators

Our workforce is fully trained and certified in the safe operation of all equipment.

### South Australia Capability

Fleet resources support delivery across metropolitan, regional, and remote locations.

With the right fleet and the right people, Roadside Services and Solutions delivers projects with precision, safety, and efficiency on time and on budget.





Equipped with advanced vehicles and plant, we provide the tools and capability to complete projects safely, efficiently, and professionally.



# Technology and Digital Transformation

## DRIVING EFFICIENCIES

## ENABLING RESPONSIVENESS

## EMPOWERING PEOPLE

Roadside Services and Solutions has always been built on a foundation of quality, trusted relationships, and hard work. But as customer expectations and industry demands continue to evolve, we recognise the need to be more agile, data-driven, and competitive.

Since 2018, we have been undertaking a major digital transformation initiative, investing significantly to modernise our systems, streamline operations, and enhance the way we interact with customers.

## OUR DIGITAL TRANSFORMATION

### Modern IT Infrastructure

Servers, desktops, laptops, mobile devices, and communications platforms have been fully upgraded.

### Digital Workforce

Our people are tech-savvy, upskilled, and empowered to harness digital tools for smarter, faster outcomes.

### Data-Driven Decisions

Real-time reporting of inventory, financial, and sales data enables management and directors to make informed decisions anytime, anywhere.

### Customer Engagement

A dynamic, SEO-optimised website, engaging corporate videos, and active social media channels enhance our client connections and brand visibility.

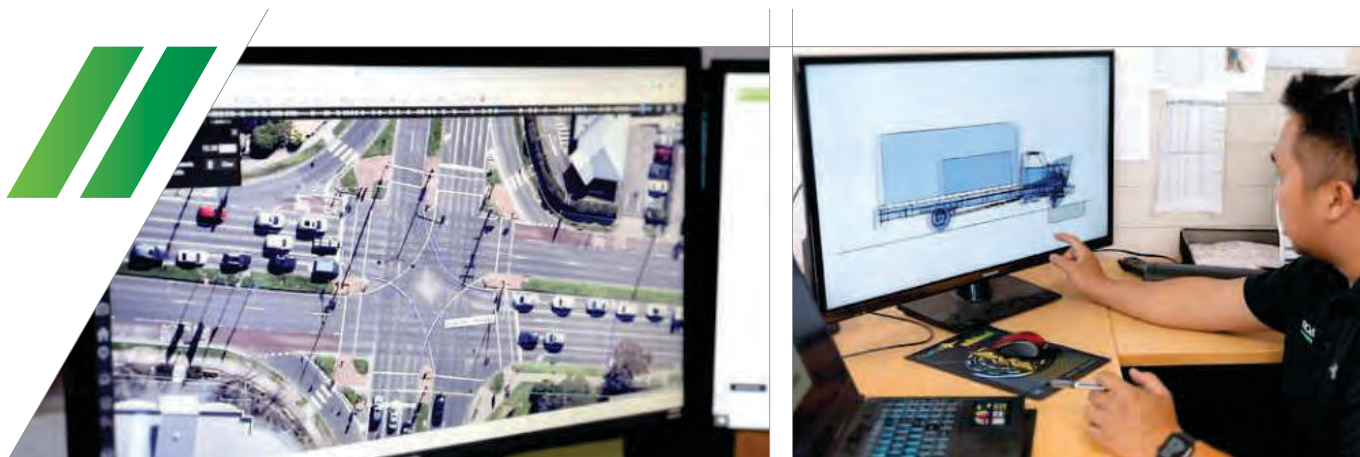
### Agile Business Model

Digital integration ensures we respond quickly to changing market conditions - critical during the challenges of COVID-19 and beyond.

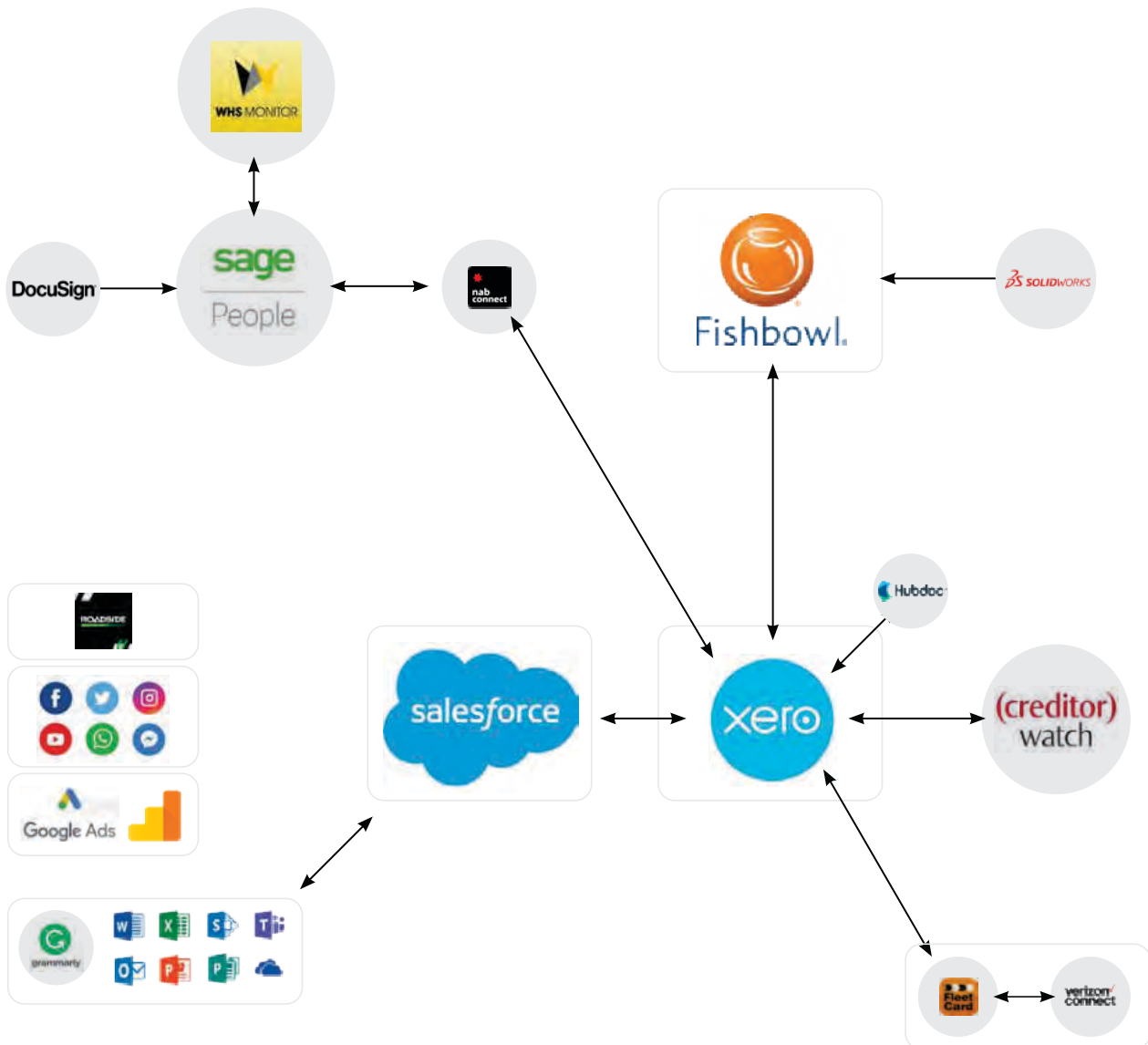
Our digital ecosystem underpins greater efficiency, stronger communication, and sharper insights. From forecasting and forward-planning to customer responsiveness, every decision is supported by accurate, real-time information.

Most importantly, our digital strategy is fully aligned with our business plan and vision - to remain one of the largest Australian-owned specialists in road safety infrastructure and services.

Roadside's technology investment ensures we deliver not only safe and compliant infrastructure solutions but also a seamless, modern, and efficient experience for our customers.



# Our Digital Environment





# Community

Roadside is deeply committed to engaging in the local communities in which it operates. At a corporate level, we strive to make a difference to individuals, groups and the broader community.

We encourage and support our personnel to be positive contributors to our community.

## A WORKFORCE TOGETHER

We recognise and respect the diverse cultural backgrounds that make up our communities and value the traditions, identities, and customs of all peoples. Our commitment to diversity and inclusion extends to creating meaningful employment opportunities and supporting businesses that reflect this richness.

Our Participation Policy is built around three key principles:

### Relationships:

building strong, respectful connections across communities.

### Respect:

honouring cultural heritage, knowledge, and traditions.

### Opportunities

fostering inclusion through employment and business engagement.

We are proud of the cultural diversity within our workforce and remain dedicated to increasing representation by actively pursuing inclusive hiring practices and engagement.







We are committed to building stronger communities by embracing diversity, fostering inclusion, and creating opportunities for people of all backgrounds.



# ROADSIDE

## SERVICES AND SOLUTIONS

SIGNAGE, CIVIL WORKS, GUARDRAIL, BOLLARDS,  
FENCING AND ENGINEERING

Roadside Services and Solutions is a wholly Australian-owned company founded in 2009.  
We specialise in creating a safer environment for our communities.

We employ a team of up to 50 staff members across Australia who share our commitment to safety and quality. Our experienced personnel can advise on comprehensive safety solutions for your unique location and circumstances.

**P** 1300 022 222 **F** 1300 131 111 **W** [www.roadside-services.com.au](http://www.roadside-services.com.au)

Company Locations:

### **SOUTH AUSTRALIA**

8 SHERRIFFS ROAD WEST, LONSDALE SA 5160

### **NORTHERN TERRITORY**

29 WINNELLIE ROAD, WINNELLIE NT 0829

### **REGISTERED ADDRESS**

8 SHERRIFFS ROAD WEST,  
LONSDALE, SOUTH AUSTRALIA  
5160

### **POSTAL ADDRESS**

PO BOX 50 MORPHETT VALE,  
SOUTH AUSTRALIA  
5162

### **AUSTRALIAN BUSINESS NUMBER**

33 137 851 837



Quality  
ISO 9001



Environment  
ISO 14001



ISO 45001  
Occupational  
Health and  
Safety



Certified Manufacturer

“Creating a **safer**  
**environment**”™